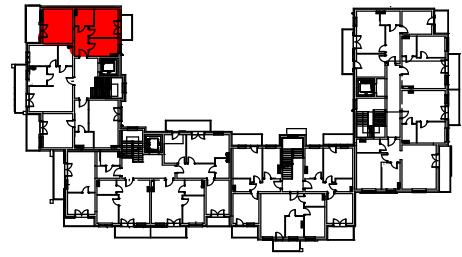
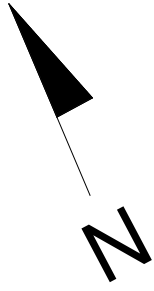
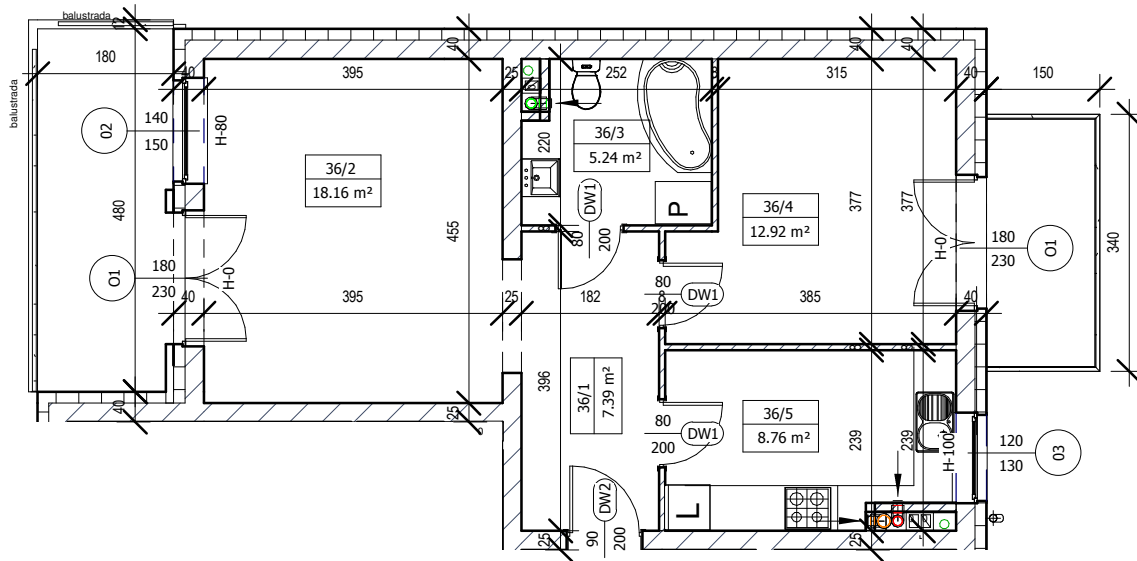


# MIESZKANIE M-36 I PIĘTRO



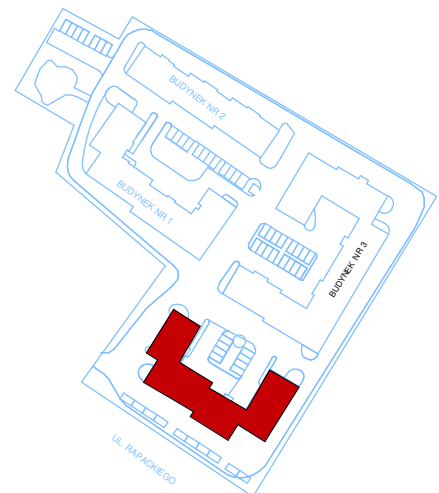
LOKALIZACJA W BUDYNGU



Mieszkanie M36		
36/1	Komunikacja	7,39m <sup>2</sup>
36/2	Pokój	18,16m <sup>2</sup>
36/3	Łazienka	5,24m <sup>2</sup>
36/4	Pokój	12,92m <sup>2</sup>
36/5	Kuchnia	8,76m <sup>2</sup>
	Razem	52,47m <sup>2</sup>



SKALA 1:100 (1cm=1m)



Plan osiedla