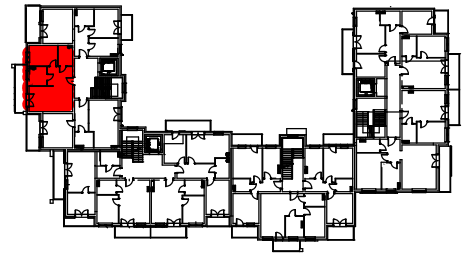
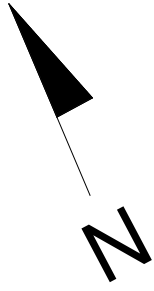
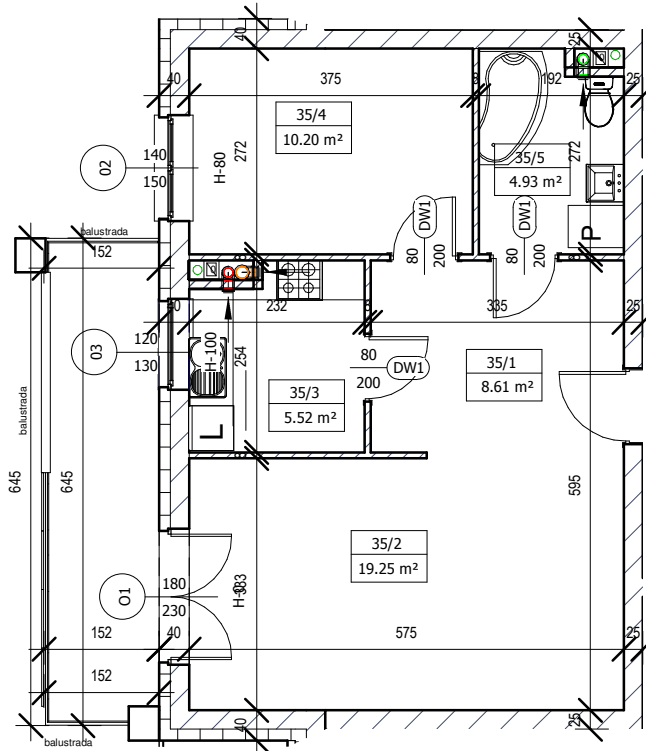


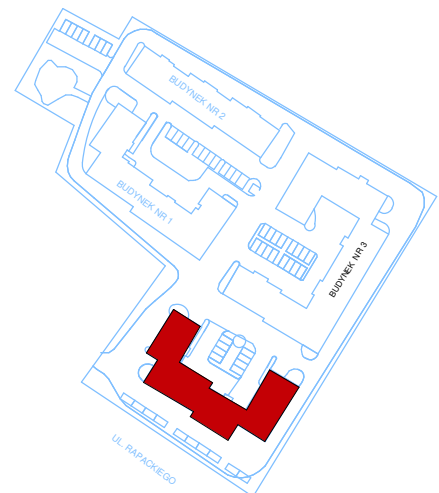
MIESZKANIE M-35 I PIĘTRO



LOKALIZACJA W BUDYNKU



Mieszkanie M35		
35/1	Komunikacja	8,61m ²
35/2	Pokój	19,25m ²
35/3	Kuchnia	5,52m ²
35/4	Pokój	10,20m ²
35/5	Łazienka	4,93m ²
	Razem	48,51m ²



Plan osiedla



SKALA 1:100 (1cm=1m)