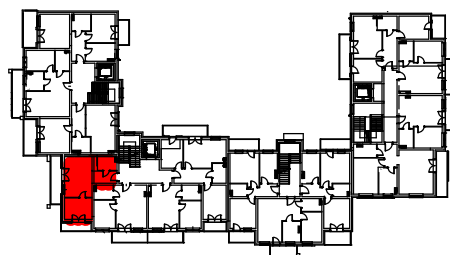
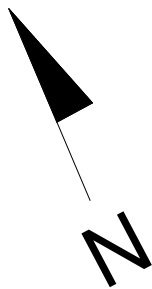
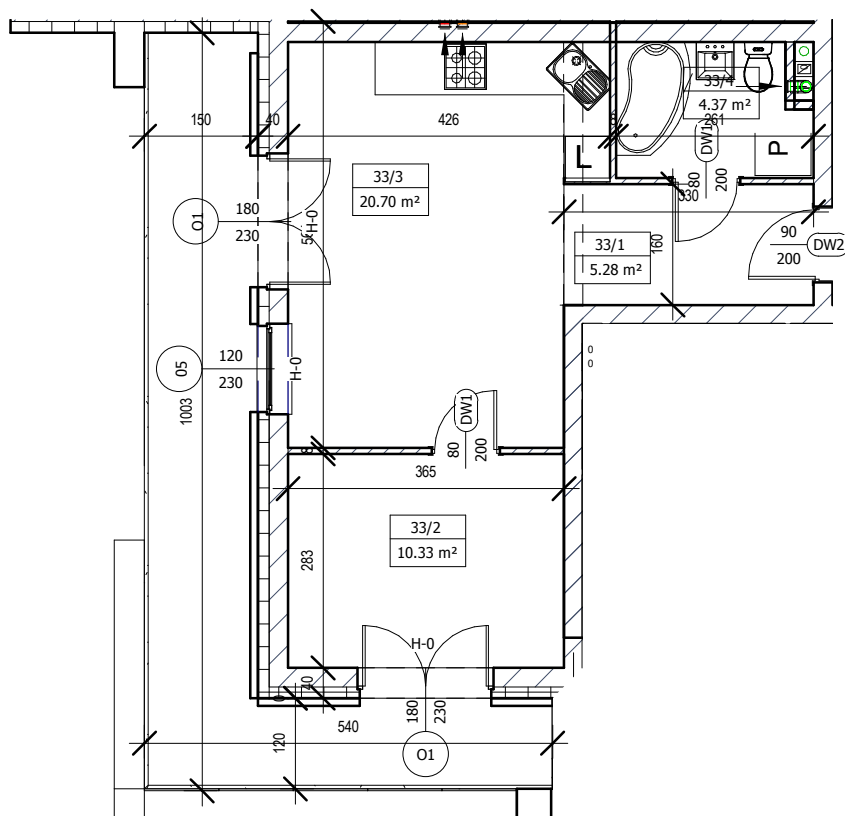


MIESZKANIE M-33 III PIĘTRO



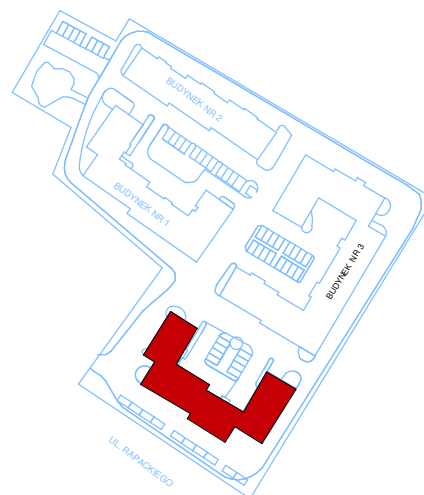
LOKALIZACJA W BUDYNKU



Mieszkanie M33		
33/1	Komunikacja	5,28m ²
33/2	Pokój	10,33m ²
33/3	Pokój z aneksem	20,70m ²
33/4	Łazienka	4,37m ²
	Razem	40,68m ²



SKALA 1:100 (1cm=1m)



Plan osiedla