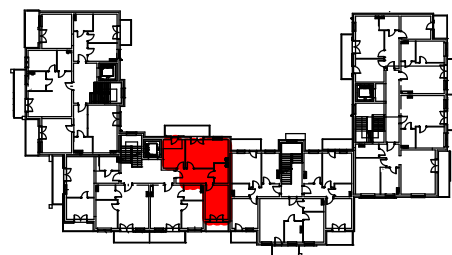
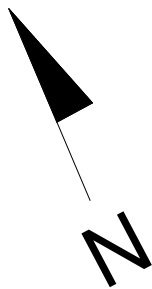
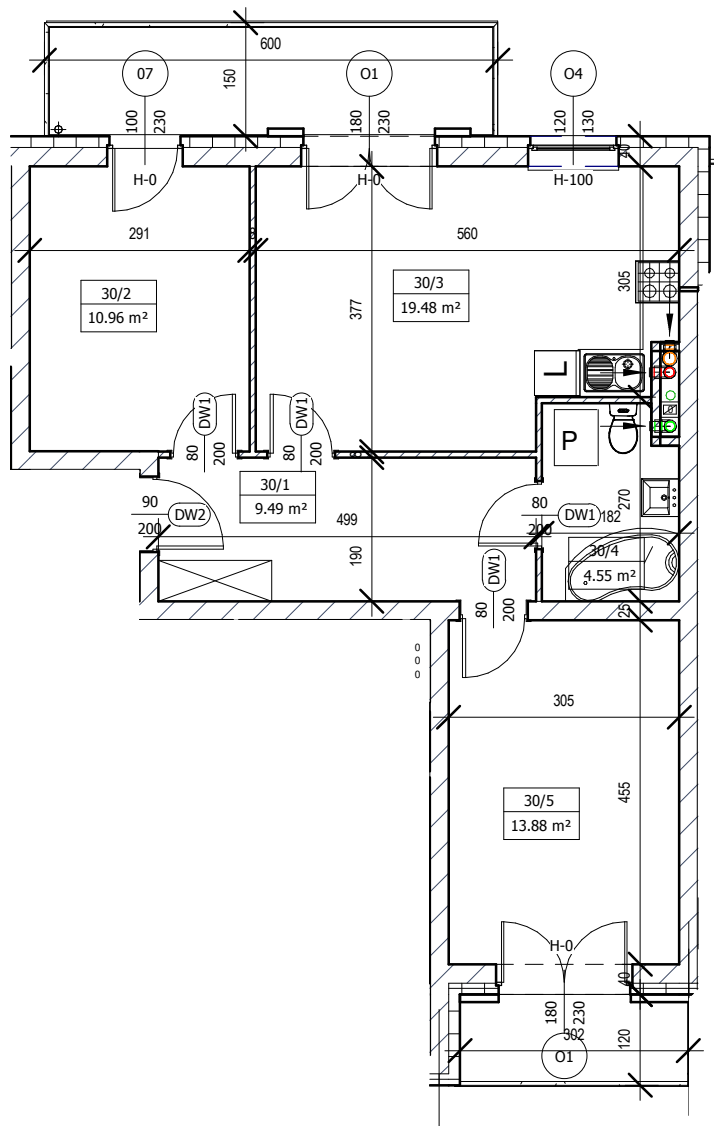


MIESZKANIE M-30 III PIĘTRO



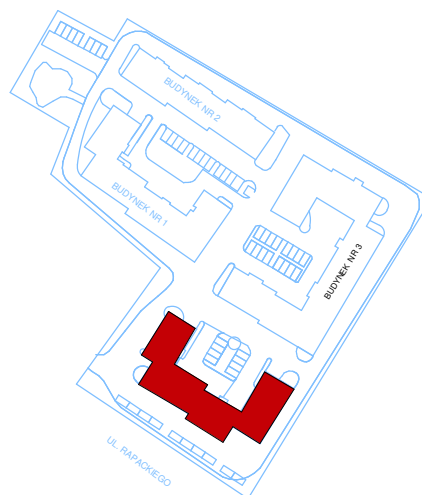
LOKALIZACJA W BUDYNKU



Mieszkanie M30		
30/1	Komunikacja	9,49m ²
30/2	Pokój	10,96m ²
30/3	Pokój z aneksem	19,48m ²
30/4	Łazienka	4,55m ²
30/5	Pokój	13,88m ²
Razem		58,36m ²



SKALA 1:100 (1cm=1m)



Plan osiedla