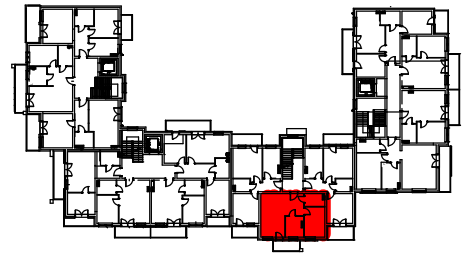
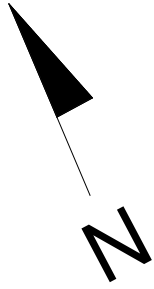
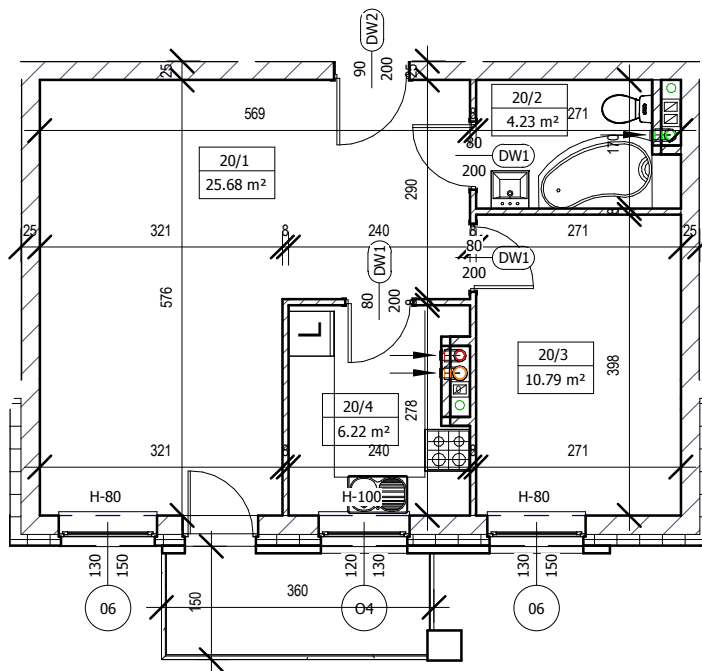


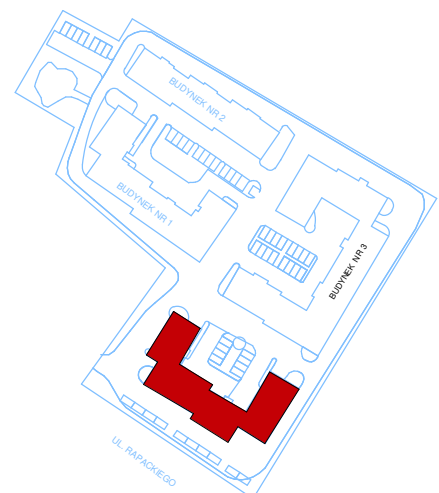
MIESZKANIE M-20 III PIĘTRO



LOKALIZACJA W BUDYNKU



Mieszkanie M20		
20/1	Pokój	25,68m ²
20/2	Łazienka	4,23m ²
20/3	Pokój	10,79m ²
20/4	Kuchnia	6,22m ²
	Razem	46,92m ²



Plan osiedla



SKALA 1:100 (1cm=1m)