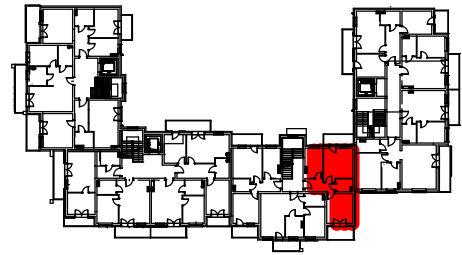
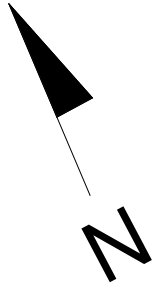
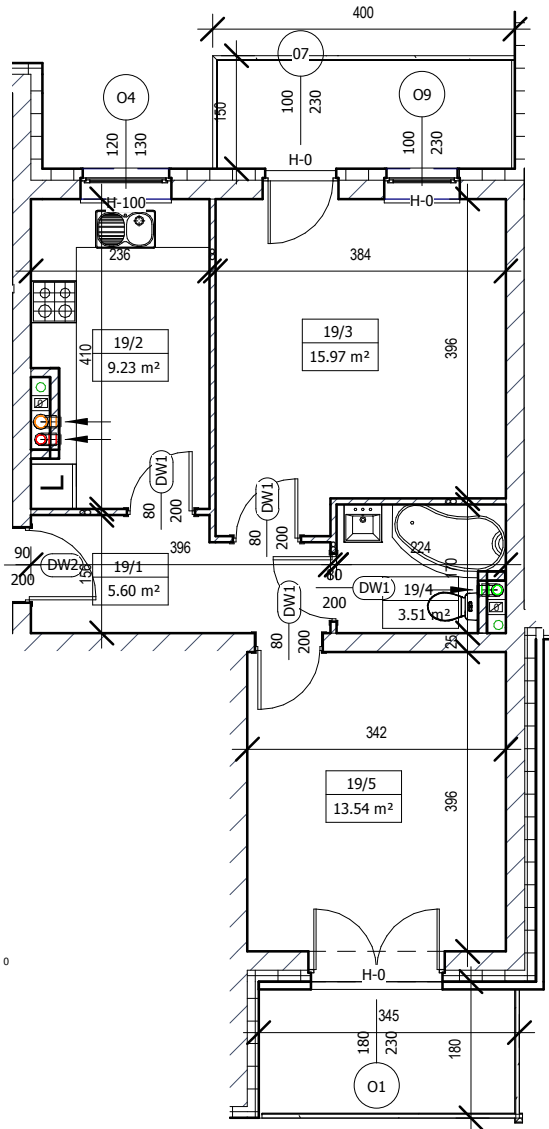


MIESZKANIE M-19 III PIĘTRO



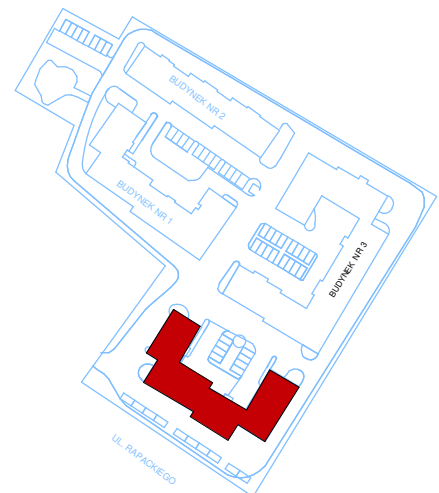
LOKALIZACJA W BUDYNKU



Mieszkanie M19		
19/1	Komunikacja	5,60m ²
19/2	Kuchnia	9,23m ²
19/3	Pokój	15,97m ²
19/4	Łazienka	3,51m ²
19/5	Pokój	13,54m ²
Razem		47,85m ²



SKALA 1:100 (1cm=1m)



Plan osiedla