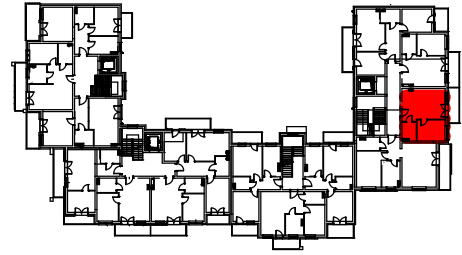
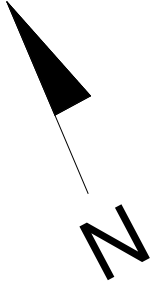
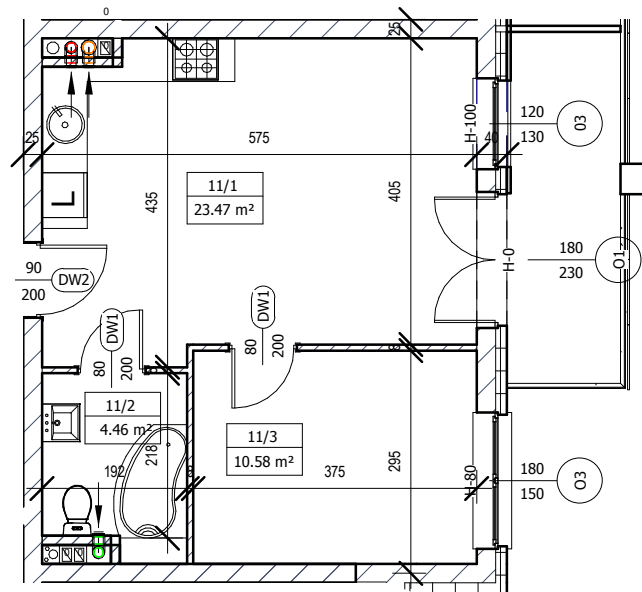


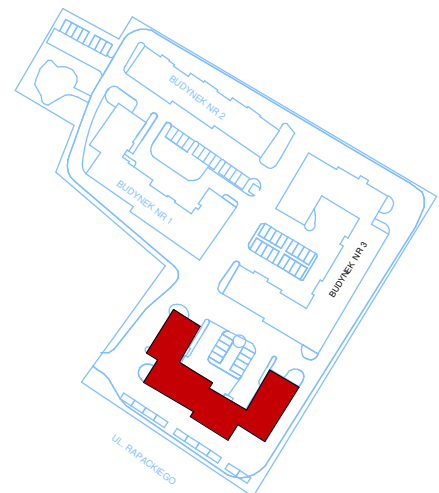
MIESZKANIE M-11 III PIĘTRO



LOKALIZACJA W BUDYNKU



Mieszkanie M11		
11/1	Pokój z aneksem	23,47m ²
11/2	Łazienka	4,46m ²
11/3	Pokój	10,58m ²
	Razem	38,51m ²



Plan osiedla



SKALA 1:100 (1cm=1m)