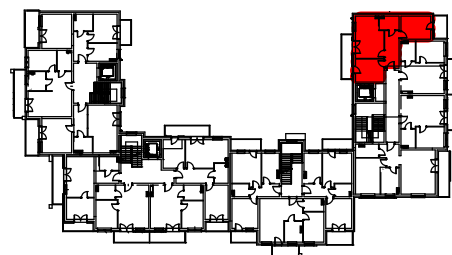
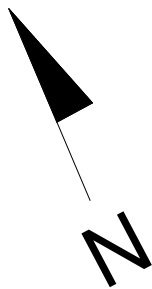
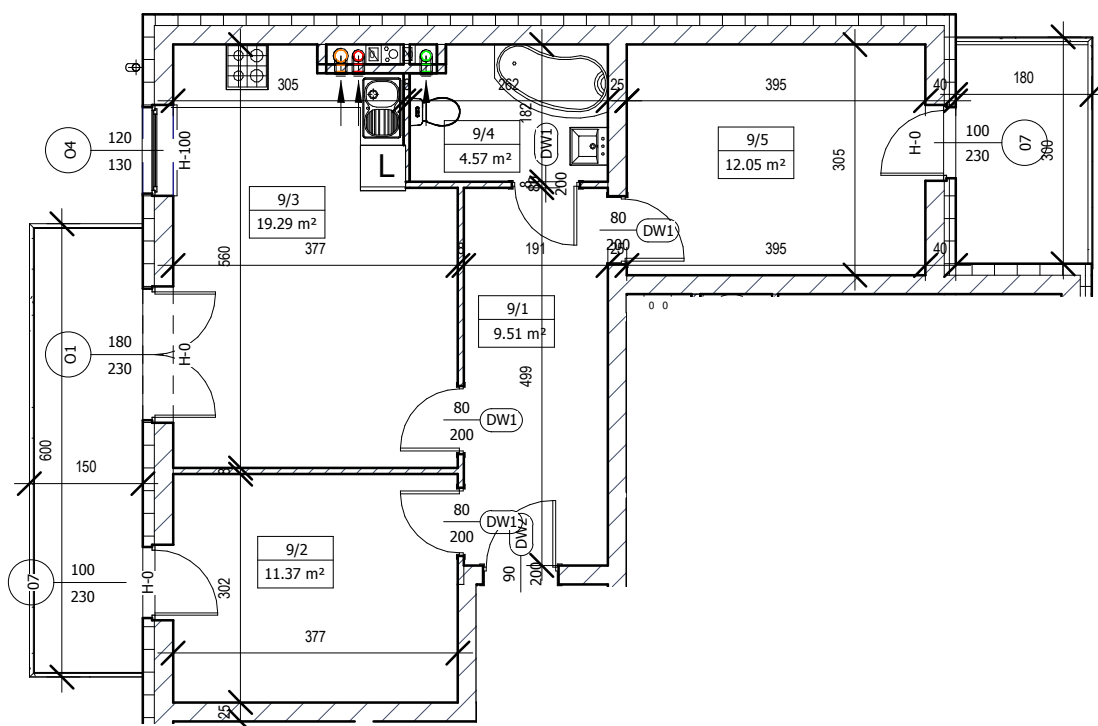


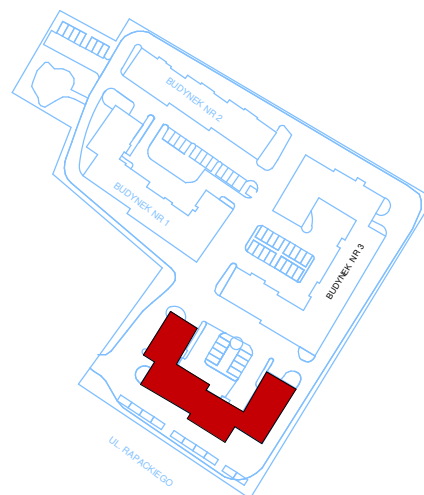
MIESZKANIE M-9 III PIĘTRO



LOKALIZACJA W BUDYNGU



Mieszkanie M9		
9/1	Komunikacja	9,51m ²
9/2	Pokój	11,37m ²
9/3	Pokój z aneksem	19,29m ²
9/4	Łazienka	4,57m ²
9/5	Pokój	12,05m ²
Razem		56,79m ²



Plan osiedla



SKALA 1:100 (1cm=1m)